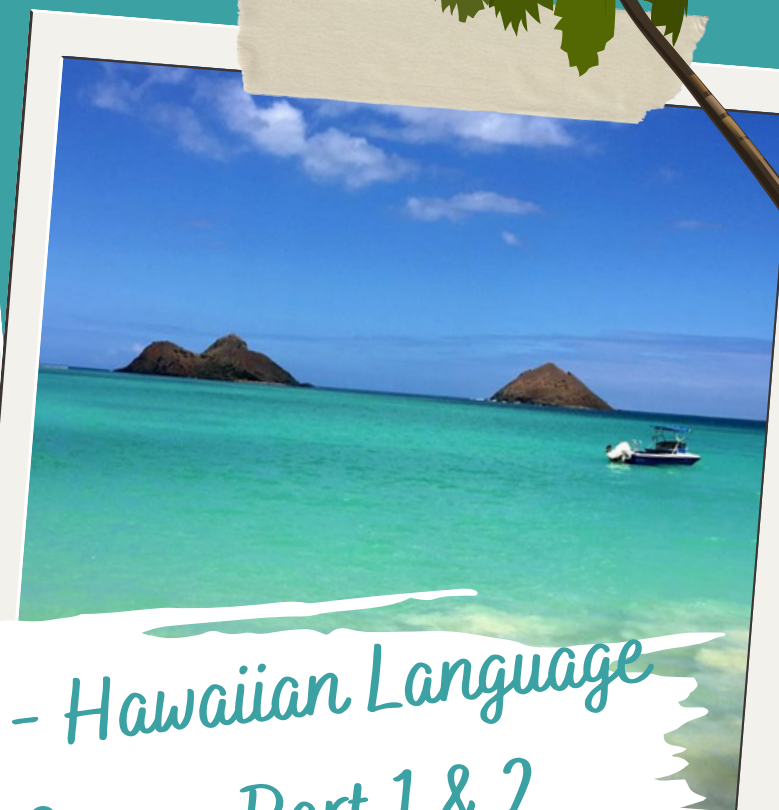
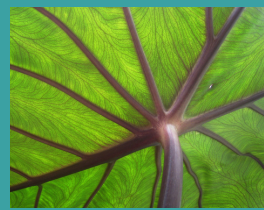




Ancient Wisdom Academy AWA  
Une Lōhai



*'Ōlelo Hawai'i - Hawaiian Language  
Beginner's Course Part 1 & 2  
with translation German-English*



**'Ōlelo Hawai'i 101**  
Hawaiian Language  
Beginner's Course  
Part 1 with translation  
German - English

From February 5 to  
March 25, 2024 each  
Monday Live-Zoom  
Classes 5-7 pm CET  
(6-8 am HST)

**'Ōlelo Hawai'i 102**  
Hawaiian Language  
Beginner's Course  
Part 2 with translation  
German - English

From April 15 to June  
3, 2024 each  
Monday Live-Zoom  
Classes 5-8 pm CET  
(6-8 am HST)

# Info and Registration



+41 79 474 36 85



[www.ancientwisdomacademy.com](http://www.ancientwisdomacademy.com)



[corina.peter@protonmail.com](mailto:corina.peter@protonmail.com)



# 'Ōlelo Hawai'i - Hawaiian Language Beginner's Course Part 1 & 2 with translation German - English

## Course Description

### Papa 'Ōlelo Hawai'i 101 Beginners Course Part 1

#### Papa 'Ōlelo Hawai'i 101 Beginners Course Part 1

This 8-week course is based on chapters (Mokuna) 1 - 4 of "Nā Kai 'Ewalu" by Kauanoe Kamana and Pila Wilson and the language study program at the University of Hawai'i. It corresponds to the first part of the introductory semester of Hawaiian language study at the University and includes 16 lessons as live Zoom classes, lessons of learning material online and at least 2 hours of self-study per week. The goal is to reach level 101 in Hawaii or A1 in Europe in the use of the language, which enables you to greet people, introduce yourself, ask questions or describe feelings and characteristics of yourself and others. In addition, certain Hawaiian cultural norms and practices will be taught during the course.

### Papa 'Ōlelo Hawai'i 102 Beginners Course Part 2

This course is a continuation of 101. Students in this course will build on the basic Pepeke (sentence), vocabulary and cultural knowledge learned in 101. New grammar will be introduced that builds on the Pepeke basics. The focus of course 102 is on mastering the vocabulary and Pepeke Painu in Hawaiian in conversation. This course emphasizes correct pronunciation and intonation. Between 40%-50% of class time is spent practicing speaking and listening and, to a lesser extent, reading and writing.

### Investment in Yourself

- 3 minimum participants CHF 950.- / EUR 970.- / **USD 950.- / GBP 850.- per part**
- 4-6 participants CHF 900.- / EUR 920.- / USD 900.- / **GBP 800.- per part**
- 8-12 participants CHF 850.- / EUR 870.- / USD 850.- / **GBP 750.- per part**

### Wir schenken dir folgende Rabatte:

- Bei Buchung beider Anfängerkurse 101 und 102 gleichzeitig, bezahlst du für beide Anfänger-Kurse zusammen nur CHF 1'600.- / EUR 1'640.- / USD 1'600.- / GBP 1'400.-
- Wenn du mit einer Freundin/einem Freund teilnimmst, schenken wir jedem von euch pro gebuchten Anfänger-Kurs CHF / EUR / USD / GBP 50.-.
- Bist du Wiederholerin / Wiederholer kannst du für CHF / EUR / USD / GBP 200.- pro Kurs wiederholen.

Ratenzahlung von 2 - 4 Raten ist möglich.

Nimm bitte mit Piliaka Kontakt auf. Mobile +41 79 474 36 85 oder [corina.peter@protonmail.com](mailto:corina.peter@protonmail.com).

